

Treatment of fractured composite restoration of first lower molar with 3M™ Filtek™ One Bulk Fill Restorative

Clinical dentistry and photography by: Dr. Giuseppe Chiodera, Brescia, Italy

About the Case:

Male patient.

Patient needed treatment due to a fractured composite restoration. Fractured restoration was causing patient significant discomfort.

Challenge:

The complete removal of the fractured composite restoration resulted in a large restoration that needed to be completed in a short amount of time.

Step-by-Step:



Fig. 1: Initial situation: Fractured composite restoration of first lower molar.



Fig. 2: The tooth is isolated and the insufficient composite restoration completely removed.

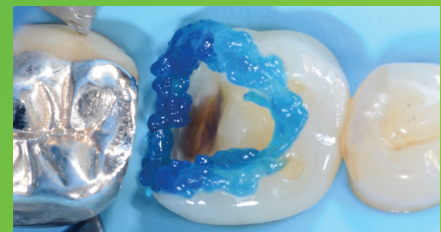


Fig. 3: Tooth is etched with a selective enamel etching technique using 3M™ Scotchbond™ Universal Etchant.

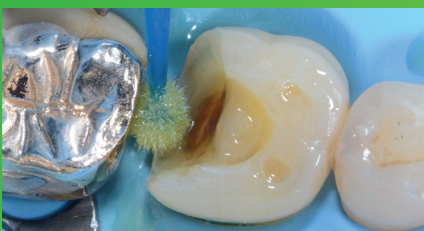


Fig. 4: 3M™ Scotchbond™ Universal Adhesive is applied for 20 seconds.

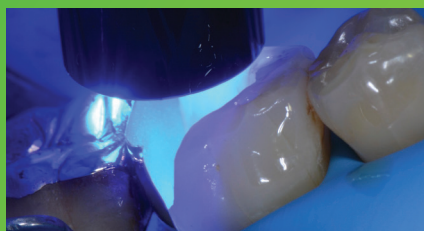


Fig. 5: After air drying for approximately 5 seconds, 3M™ Elipar™ DeepCure-S LED Curing Light is used to light cure for 10 seconds.



Fig. 6: 3M™ Filtek™ One Bulk Fill Restorative, shade A3, is placed directly into the cavity and then cured according to the Instructions for Use.

Treatment of fractured composite restoration of first lower molar with 3M™ Filtek™ One Bulk Fill Restorative (continued)



Fig. 7: 3M™ Filtek™ One Bulk Fill Restorative surface finished before final polishing.



Fig. 8: Pre-polishing of restoration with 3M™ Sof-Lex™ Pre-Polishing Spiral.

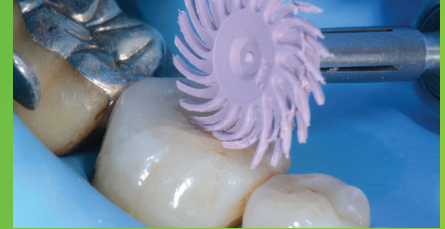


Fig. 9: Polishing with 3M™ Sof-Lex™ Diamond Polishing Spiral to create a final smooth and high-gloss polish for a natural-looking restoration.



Fig. 10: Final restoration at a recall visit 4 months after placement is natural-looking and esthetic.

The 3M Difference:

With its one-step placement and easy handling, 3M™ Filtek™ One Bulk Fill Restorative enabled a fast and easy posterior restoration without compromising on esthetics. The patient was very satisfied with the efficiency of the procedure and natural-looking result.

Refer to Instructions for Use (IFU) for complete product information.

3M

3M Oral Care
2510 Conway Avenue
St. Paul, MN 55144-1000 USA
Phone 1-800-634-2249
Web 3M.com/dental

3M Deutschland GmbH
Location Seefeld
3M ESPE • ESPE Platz
82229 Seefeld • Germany
Info3MESPE@mmm.com
www.3MESPE.com

3M, Elipar, Filtek, Scotchbond and Sof-Lex are trademarks of 3M Company. Used under license in Canada. Please recycle. © 3M 2017. All rights reserved.